

MCHn: n=3-8 (e.g., n=8 for 1P8T)

The **MCHn**- series features 1P8T with SC- or N-type connectors and an operation frequency range from DC to 1 GHz. This product is of failsafe-type. The options include TTL and coil suppression diodes etc.



### Specifications

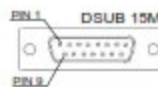
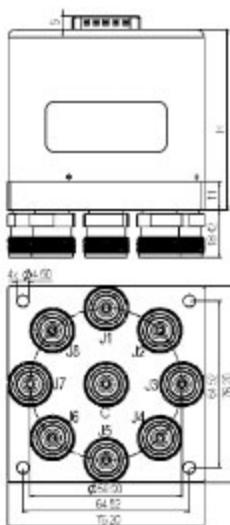
Contact Material	Plated Au
Switching Sequence	Break before Make
Switching Time (max)	15msec
Impedance	50Ω
Temperature Range	-25° C to +65°
Relative Humidity	5 to 85%
Operation Life (cycles)	1,000,000
Vibration Operating	10G RMS, 20-2000Hz
Mechanical Shock (non-operating)	50G, 1/2 Sine, 11msec

Voltage (VDC)	12	18	24	28
Current (mA)	Failsafe			140

Other options are available upon request.

Frequency Range (GHz)	VSWR (max)	Insertion Loss (dB) (max)	Isolation (dB) (min)
DC-1	1.15	0.15	80

Higher frequency ranges are available upon request.

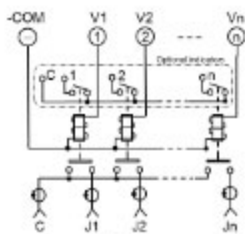


FAILSAFE 15-PIN D-SUB PINOUT	
Pin No.	PINOUT
m=1-8	Vn (Jn-COM)
9	COM(-)
10-15	UNUSED

FAILSAFE TTL 15-PIN D-SUB PINOUT	
Pin No.	PINOUT
m=1-8	An (Jn-COM)
9	COM(-)
10-14	UNUSED
15	+VDC

Pin 1-8: The corresponding control signal inputs.

FAILSAFE / NORMALLY OPEN



FAILSAFE / NORMALLY OPEN with TTL

