

Description

Mi-Wave's 605 Series Short Slot Hybrid is a narrow wall 3 dB coupler, available in standard wave-guide sizes from 18.0 to 11.0 GHz. This compact, four-port device is inherently matched and well-suited for balanced mixers and power splitting circuits. There is a 90 degree phase difference between the output signals, while the fourth port is isolated from the input.

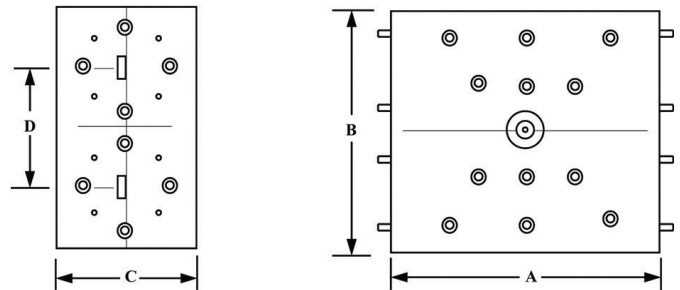
- *Small*
- *Compact*
- *Negligible Coupling Variation*

Access to the input and output ports of these hybrids is achieved with a special dual-waveguide, single flange arrangement.

Applications

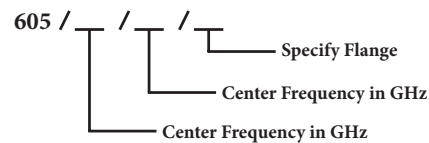
The 605 Series Short Slot Hybrids are compact 3 dB couplers that can be used in waveguide bridge circuits, balanced mixers, phase shifters, and power splitters where space is limited.

Dimensional Specifications								
Model No.	A		B		C		D	
	in.	mm	in.	mm	in.	mm	in.	mm
605K	3.75	95.3	2.47	62.7	1.12	28.5	1.38	35.1
605A	3.50	88.9	2.47	62.7	1.12	28.5	1.38	35.1
605B	2.60	66.0	2.37	60.2	1.14	29.0	1.18	30.2
605U	2.60	66.0	2.37	60.2	1.14	29.0	1.18	30.2
605V	1.75	44.5	1.75	44.5	1.0	25.4	0.90	22.86
605E	1.75	44.5	1.75	44.5	1.0	25.4	0.90	22.86
605W	1.75	44.5	1.75	44.5	1.0	25.4	0.90	22.86



Series 605		
Input	Power Split	Phase Relation
1	2, 3	90 degrees out
2	1, 4	90
3	1, 4	90
4	2, 3	90

Ordering Information



Consult with MI-wave for current outline dimensions

Technical Specifications (typical)								
Model No.	605Ku	605K	605A	605B	605U	605V	605E	605W
Coupling (dB)	3	3	3	3	3	3	3	3
VSWR (typical)	1.15	1.15	1.15	1.15	1.15	1.15	1.15	1.15
Isolation (dB) (typical)	20	20	20	20	20	20	20	18
Bandwidth (%) (typical)	6	6	6	6	6	6	6	6