

### Description

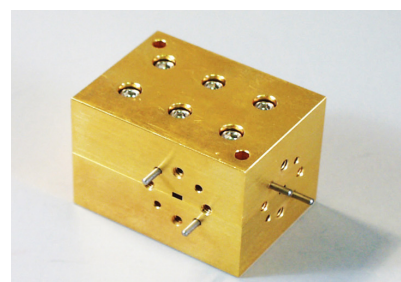
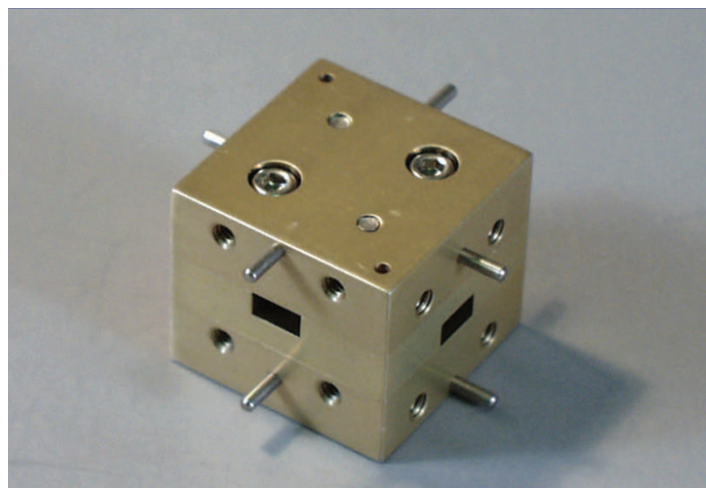
Mi-Wave's 564 Series Cross Guide Coupler consists of two waveguides at right angles to each other, joined by small coupling slots whose size, location, and orientation determine the coupling and directivity of the unit. All ports are available for sampling or injecting energy and are clearly marked to indicate the coupling direction.

- *Low VSWR*
- *Four-port Device*
- *Rugged Construction*
- *Broadband Operation*

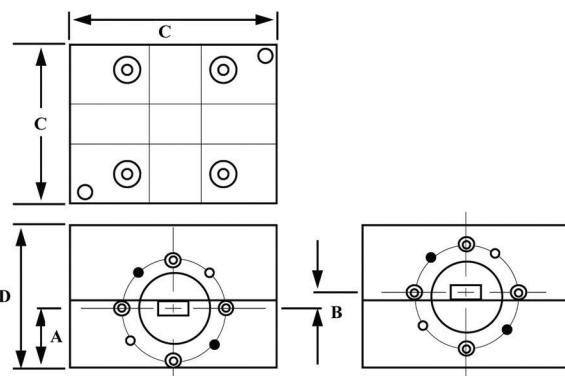
### Applications

The 564 Series Cross Guide Directional Couplers provide an efficient means for sampling power or injecting a signal into a waveguide transmission line.

565 has 4th port terminated  
Check with Miwave for dimensions

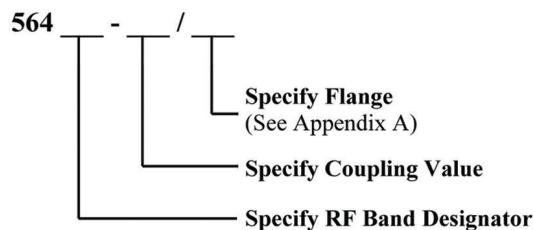


Dimensional Specifications								
Model No.	A		B		C		D	
	in.	mm	in.	mm	in.	mm	in.	mm
564K	.568	14.4	0.18	4.6	1.62	41.1	1.31	33.3
564A	.580	14.7	0.15	3.8	1.62	41.1	1.31	33.3
564B	.594	15.1	0.12	3.0	1.62	41.1	1.31	33.3
564U	.603	15.3	0.10	2.5	1.62	41.1	1.31	33.3
564V	.588	14.9	0.08	2.01	1.25	31.8	1.25	31.8
564E	.595	15.1	0.07	1.8	1.25	31.8	1.25	31.8
564W	.600	15.2	0.05	1.3	1.25	31.8	1.25	31.8
564F	.600	15.2	0.05	1.3	1.25	31.8	1.25	31.8



Technical Specifications (typical)									
Model No.	564K	564A	564B	564U	564V	564E	564W	564F	564D
Frequency Band (GHz)	18.0–26.5	26.5–40.0	33.0–50.0	40.0–60.0	50.0–75.0	60.0–90.0	75.0–110.0	90.0–140.0	110–170
Standard Coupling Values (dB) Nom.	16, 20, 30, 40, 50								
Directivity (dB) Typical	15	15	15	15	15	15	15	15	14
VSWR (typica)	1.15	1.15	1.15	1.15	1.20	1.20	1.20	1.20	1.5
Weight (oz)	2	2	2	2	3	3	3	3	3

### Ordering Information



1. Any coupling values area available upon request  
2. Nominal ± 2.0 dB coupling variation cover over the waveguide band when set for coupling value at the band center.