

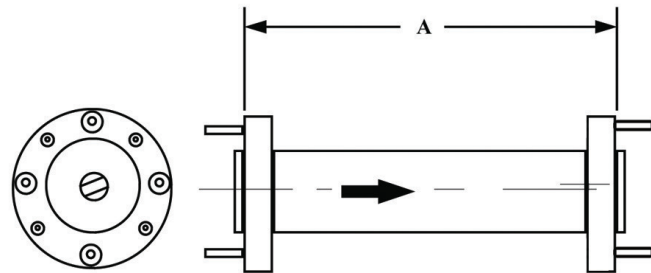
Description

Mi-Wave's 282 Series circular polarizer converts input linear signals to circularly polarized output signals. The circular polarization sense (RHCP or LHCP) and center frequency should be specified at the time of order. This polarizer will yield a maximum VSWR of 1.2 an axial ratio of 1.0 dB maximum over the indicated bandwidth.

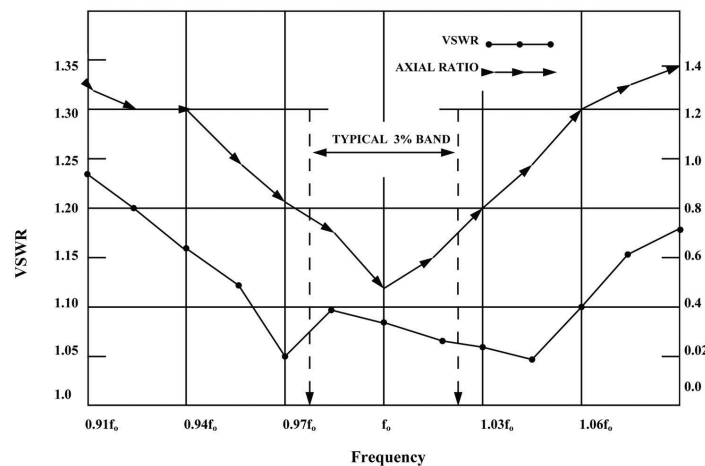
- **VSWR < 1.2**
- **Higher Frequency Units will be quoted on request.**
- **Axial Ratio < 1.0 dB Over the indicated bandwidth.**
- **Converts Linear Input Signals to Circular Out**
- **Specify Sense of Circular Polarization (RHCP or LHCP)**
- **Available from 12.4 to 220 GHz with 3% or Greater Bandwidth.**

Applications

- Satellite Links
- Radio Astronomy
- Communications Systems



Dimensional Specifications			
Model No.	Frequency Band (GHz)	A	
		in.	mm
282K	18.0–26.5	1.25	31.8
282A	26.5–40.0	1.25	31.8
282B	33.0–55.0	1.25	31.8
282U	40.0–60.0	1.25	31.8
282V	50.0–75.0	1.25	31.8
282E	60.0–90.0	1.25	31.8
282W	75.0–100.0	1.25	31.8
282F	90.0–140.0	1.25	31.8
282F	90.0–140.0	90.0–140.0	90.0–140.0
282F	90.0–140.0	90.0–140.0	90.0–140.0



Ordering Information

282



Specify Flange
(See Appendix A)

Three Digit Pipe Inside Diameter
(See Appendix J)

Specify RF Band Designator